



# Image Grabber

## User's Guide

Release 2.0



2950 Lake Emma Road  
Suite 1030  
Lake Mary  
Florida 32746

[www.gocoretec.com](http://www.gocoretec.com)

Welcome to Frame Grabber Users manual. This manual describes the fundamental ideas of the video, CCTV and support systems. We do not try to direct the user as to how the product should be used on site as this is a user preference.

Every attempt was made to write this manual so that it would be easy to follow and understand. The documentation department of CoreTec welcomes your inputs and suggestions for improvement.

Please send all comments and suggestions to [Feedback@GoCoreTec.com](mailto:Feedback@GoCoreTec.com).  
Please visit our website at [www.GoCoreTec.com](http://www.GoCoreTec.com) this and other documentation and product information.

---

# Contents

---

<b>USER'S GUIDE .....</b>	<b>5</b>
1.1 MAIN WINDOW .....	7
1.1.1 Startup .....	7
1.1.2 Exiting the Application .....	8
1.1.3 Edit Settings .....	9
1.1.4 Settings Preferences .....	11
1.1.5 Start Capturing .....	13
1.1.6 Adding an Entry .....	15
1.1.7 Deleting an Entry .....	16
1.1.8 Getting Help .....	17
<b>2 HARDWARE REQUIREMENTS .....</b>	<b>18</b>
2.1 PHYSICAL .....	20
2.2 ENVIRONMENTAL .....	20

Page Blank

---

# User's Guide

---

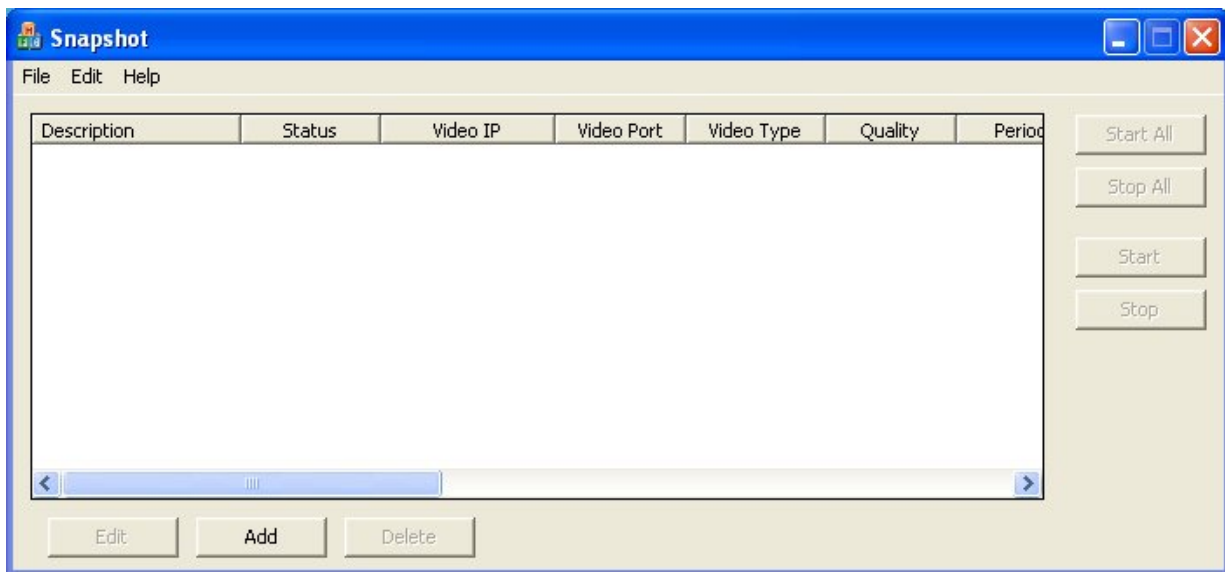
Page Blank

## 1.1 Main Window

The main window is divided into panels and tool bars. Generic MS Windows controls are found in the tool bars at the top of the main window as found in most MS Windows applications. The application tool bar is located just below the windows control bar as in most other application programs running under MS Windows. When the Frame Grabber is started up, the application database settings are loaded as the operator last configured them. The capture settings are stored in but are not loaded at startup. The operator may load the previously stored setup or start a new configuration.

### 1.1.1 Startup

The main viewing area is blank until the operator loads previously stored settings (.xml files) or begins editing new settings. See the following section on Edit Capture Settings to produce the needed settings. To load previously saved settings go to File Tab then click Open and choose the .xml file that you want to re-open.



### **1.1.2 Exiting the Application**

To terminate the application the operator may navigate to the command bar and click on the “File” menu item. The “Exit” menu selection is displayed and when clicked will terminate the program. The operator may also click on the MS Windows termination button in the upper right corner of the application window. Standard MS Windows control functions are also found there such as collapse the application and leave it running and the resizing button.

The video capture channels should be stopped before terminating the application. Following this procedure will insure the transfers in progress are completed as well as logging off or closing all open communications channels properly. In order to do so, click the “Stop All Button” to the right of the application toolbar before exiting the program.

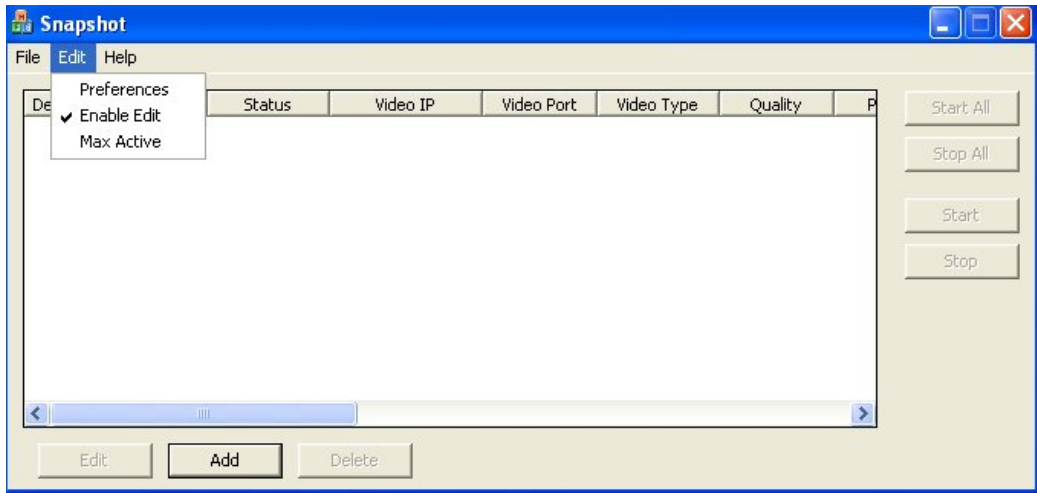
Make sure to save your settings (in a .xml file) if you want to use those settings again when you use this software again. To save, go to the File Tab and click Save or Save As (if renaming or relocating the file). To open these settings at a later time after saving them, go to the File Tab and click Open. Find the filename (a .xml file) you want to open and click OK. This will open the same channel with all the same settings that you had saved into it before.



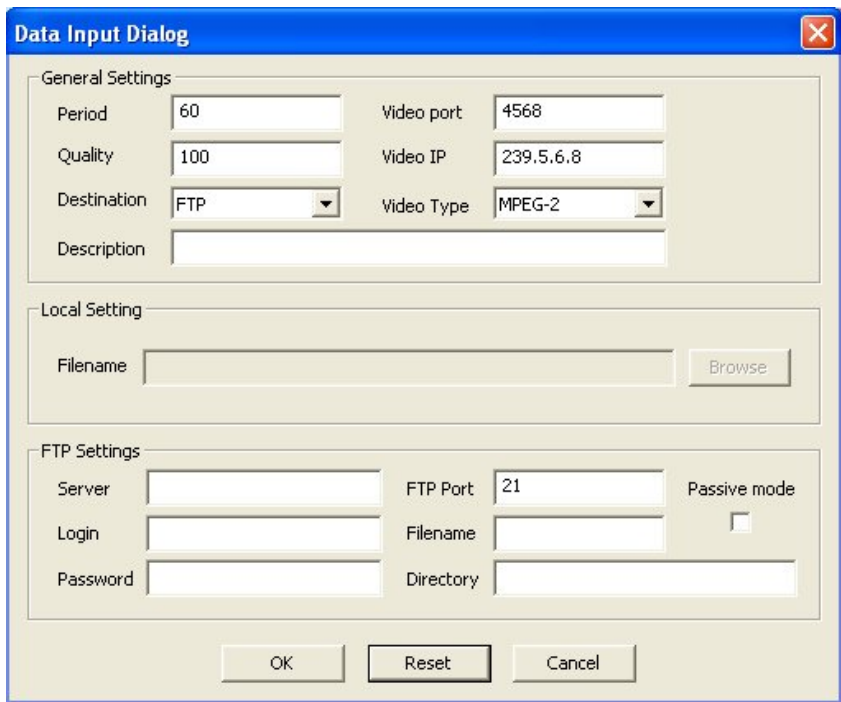
### 1.1.3 Edit Settings

The operator will be required to enter the parameters creating a channel for a video source.

The “enable edit” must be checked off before the Frame Grabber application will precede. Under the MS Windows title bar, locate the “Edit” button; navigate to the “Enable Edit” entry and click. When this attribute is checked off, the “Add” button will no longer be grayed out and therefore may be pressed in order to make any edits.



Now you may press the “Add” button since you enabled editing. The following window will appear. Different setting may be showing depending on the last configuration you had input.



**Period** – This field contains the time interval of each update to be captured. The value is entered in seconds.

**Quality** – This field contains the video quality percentage as re-encoded as the stored file.

**Video Port**-This is the port of the Video Source.

**Video IP** – This field contains the address of the video source. This is the address assigned to the video channel of the encoder. Note: This is not the hardware interface IP address of the encoder on the network. Be sure to use the “VIDEOIP” address.

**Destination** – This field provide the operator with the choice of where the snapshot will be stored. The choices are “File” or “FTP”. With the “File” selected, the file may be stored anywhere the Frame Grabber computer has access. The local drive may be the target or any other computer on the network not requiring log in protocols. With the “FTP” selected, the target will be a server or FTP site. This selection is required where a login type protocol is required such as a user name and password dialog, which must occur for the link to be completed.

**Video Type**- Mpeg2 or Mpeg4.

**Description** – This field contains a label the operator may assign to the video channel, which describes the position of the camera or video source or function of the video stream.

**Filename**- This is the filename (if you chose File as your destination) in your computer where you want the images to be stored.

**FTP Server** – This field contains the computer acting as a server on the network. This field may contain an IP address or a web site name. “192.168.0.25” as an address or “ftp1.xyzserver.com” as the web address.

**FTP Port** – This field contains the port number the FTP server is listening for the incoming stream.

**FTP Login**- This field contains your Login needed to login to the server.

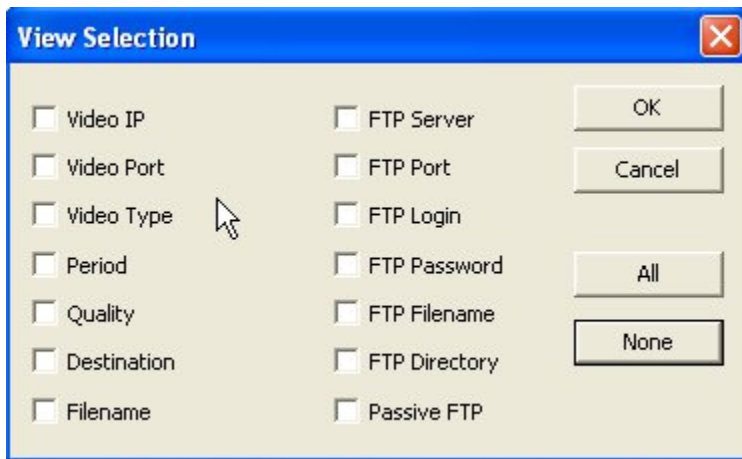
**FTP Password** – This field contains the password needed to log into the server computer.

**FTP Filename** – This field contains the filename the picture is to be assigned.

**FTP Directory** – This field contains the directory on the server system. This field should contain the drive letter and the complete operating system (OS) path name to the destination location.

### 1.1.4 Settings Preferences

The channel used to capture a snapshot of the video stream has many parameters the operator will need to understand before the function is completed. The display is divided into rows and columns. Each row is a channel linked to a video source and has a destination for the captured snapshot. The paragraphs below describe the columns that may be viewed in the display in detail. When the application is running, the operator may view all of the columns that he/she has chosen to see by using the scroll bar control at the bottom of the frame. In order to choose the parameters you would like to be able to view in the display you must go to the “EDIT” tab and click Preferences. A window will pop up and here you may check off the parameters you want to be able to view in the display columns.



**Status** – This field is a textual form of the color codes listed at the bottom of the frame of the application. This field will always appear in the display.

**Video IP** – This field contains the address of the video source. This is the address assigned to the video channel of the encoder. Note: This is not the hardware interface IP address of the encoder on the network. Be sure to use the “VIDEOIP” address.

**Video Port**-This is the port of the Video Source.

**Video Type**- Mpeg2 or Mpeg4.

**Period** – This field contains the time interval of each update to be captured. The value is entered in seconds.

**Quality** – This field contains the video quality percentage as re-encoded as the stored file.

**Destination-** This field provides the operator with the choice of where the snapshot will be stored. The choices are “File” or “FTP”. With the “File” selected, the file may be stored anywhere the Frame Grabber computer has access. The local drive may be the target or any other computer on the network not requiring log in protocols. With the “FTP” selected, the target will be a server or FTP site. This selection is required where a login type protocol is required such as a user name and password dialog, which must occur for the link to be completed.

**Filename-** This is the filename (if you chose File as your destination) in your computer where you want the images to be stored.

**FTP Server** – This field contains the computer acting as a server on the network. This field may contain an IP address or a web site name. “192.168.0.25” as an address or “ftp1.xyzserver.com” as the web address.

**FTP Port** – This field contains the port number the FTP server is listening for the incoming stream.

**FTP Login-** This field contains your Login needed to login to the server.

**FTP Password** – This field contains the password needed to log into the server computer.

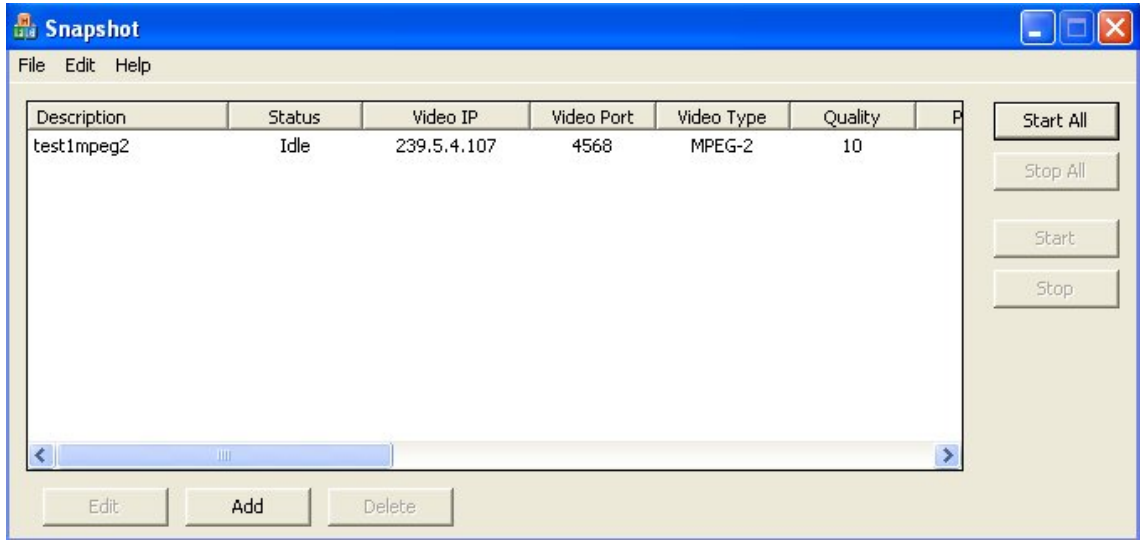
**FTP Filename** – This field contains the filename the picture is to be assigned.

**FTP Directory** – This field contains the directory on the server system. This field should contain the drive letter and the complete operating system (OS) path name to the destination location.

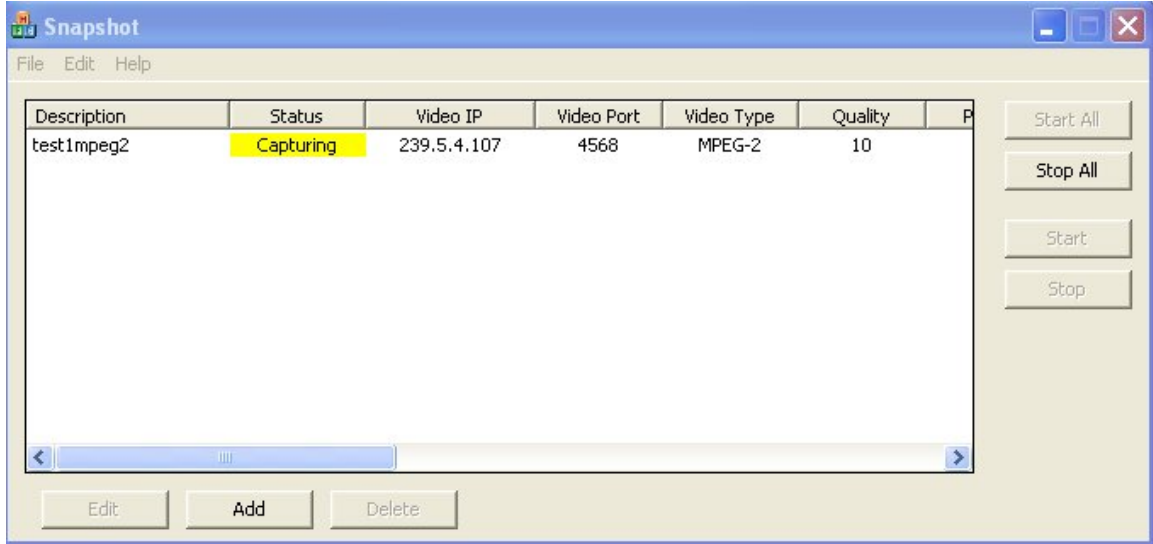
### 1.1.5 Start Capturing

When the capture settings for each encoder of your choosing, the operator may then click the “Start All” button. In a few seconds, the channels will begin the logging in process and start sending video streams to the frame grabber system. You may also start or stop any channel one at a time by highlighting the channel you want to start/stop and pressing the Start or Stop button. The video IP field is the source address of the stream and the other fields show the parameters of the channel. The “Status” field displays the status in textual form and also indicated with changing color. The status of each channel will change in real time and at times may flicker because the status may go through many updates in a short time.

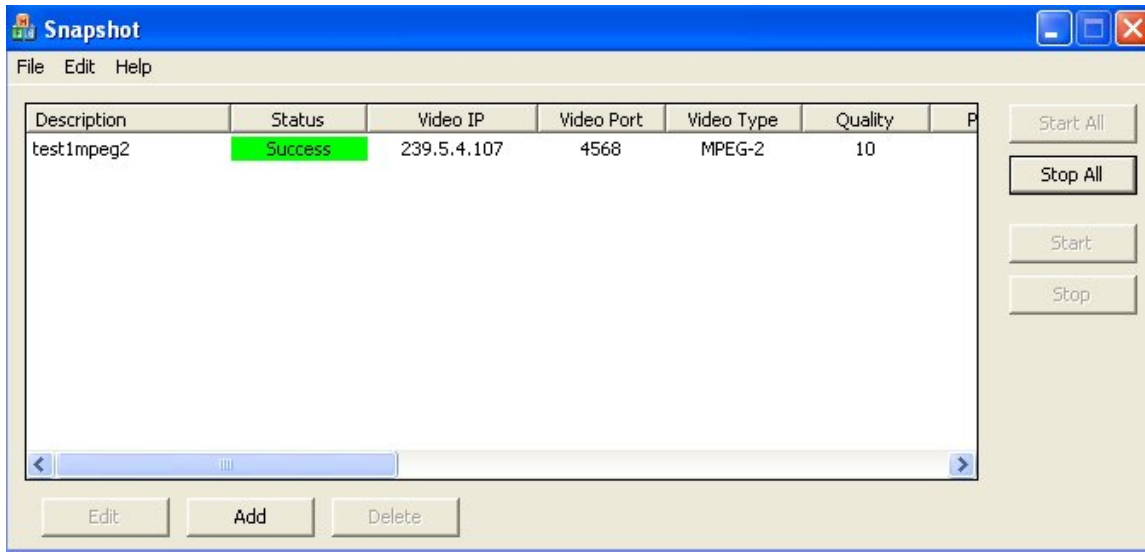
Here is an Example of what you may see (with only 1 channel):



(This channel has not been started to capture images)



(Program is currently capturing image from video)

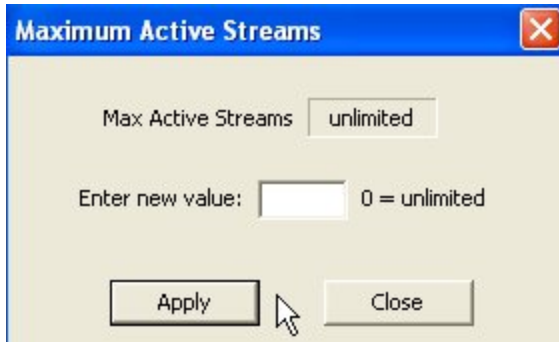


(The capturing of the video was successful)

### 1.1.6 Adding an Entry

Clicking the “Add” button below the display of channels will allow you to add another channel with different settings.

You may set a limit to how many active channels that may run simultaneously by going to the Edit tab and clicking on “Max Active”. The following window will pop up.

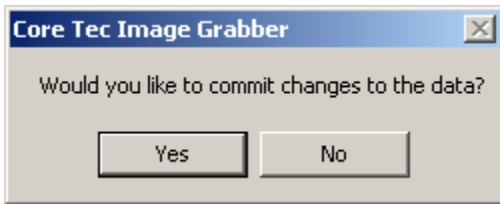


Here you may enter the Max number of active channels allowed. If you would like to allow an unlimited number of channels then enter 0. Press “Apply” when finished.

### 1.1.7 Deleting an Entry

When you highlight a channel (a row in the display), the once grayed out “Delete” and “Edit” button will become clickable. By highlighting the channel you want to delete then clicking the “Delete” button then yes to the Commit Operation, you will have successfully deleted it from the list. It is recommended to stop that specific channel from running before you delete it.

All operations that change the entry form must be followed by the commit operation.





### 1.1.8 Getting Help

The on-line manual, this document as well as the “About” dialog are found here. The revision of the Imagee Grabber application as well as other information about the application will be displayed.



---

## **2 Hardware Requirements**

---

Described in detail are the hardware requirements for the Image Grabber system. The physical environment, which includes all network connections and configurations, must be in place before hardware can be verified. Typical functional requirements deal with communication efficiency, reliability, sub-system portability, data storage, response time, expandability, and so on.

Page Blank

## **2.1 Physical**

### *Image Grabber Computer*

- Windows XP(SP2 or higher)/ 2000 operating system

### *CoreTec Encoders*

- VCX2400E
- VCX4400E
- VCX6400E

## **2.2 Environmental**

- Ethernet based LAN (Local Area Network)
- Ethernet based MAN (Managed Area Network)